

# Data Sheet

# 2507000-02

## AerobicGuard Classic Control with Remote Monitoring



The AerobicGuard Classic Connect Control has the following features:

- A complete control that manages one water pump based on timer and float status.
- One programmable digital timer module with two control modes (Night Spray or Dosing Mode) and Bluetooth accessible.
- One remote monitor module with WiFi connectivity. Monitors voltages and currents for water pump and air compressor independently, reporting data, events, and alarms to the cloud.
- Inputs for three floats.
- 120VAC pumps supported.
- Replaceable pump relay for easy maintenance.

- Replaceable surge protector.
- One 120VAC and one low voltage DC external alarm inputs.
- Monitors 1 air pressure.
- Independent breakers for control, air compressor, and pump.
- Audible and visual alarms with silence switch.
- Door switch for open/closed indication.

### Specifications:

- Input Supply: Single Phase L, N, G.
- Control Supply: 120VAC, 5A breaker.
- Air Compressor Supply: 120VAC, 15A breaker.
- Pump Supply: 120VAC 20A breakers.
- Float inputs/outputs: 120VAC Control Supply Voltage, protected by resettable fuse.
- Air Compressor Rated Pressure: 10 PSI max.
- Pressure input: ¼" OD tubing quick connect.

### Timer Module:

The Timer Module is optional. If not installed, the timer enable output is always enabled.

The Timer Module can operate in one of two modes: 24Hr Mode restricts pump activity to a window specified by the operator; e.g. from 1 to 4am. (Resolution in hours.)

The Dosing Mode continuously alternates between a specified off time and on time; e.g. on for 15 minutes and off for 2 hours. (Resolution in seconds.)

The timer settings may be adjusted locally over Bluetooth, or remotely via the app or web site.

# Data Sheet

# 2507000-02

The timer has an internal coin cell battery to preserve time while the control is not powered. Estimated battery life is 10 years.

The Remote Monitor Module connects to the internet through a local WiFi network. Network provisioning and configuration is handled over Bluetooth.

## Remote Monitor Module:

The Remote Monitor Module is optional. The control will operate normally without remote monitoring.

## Relay Module:

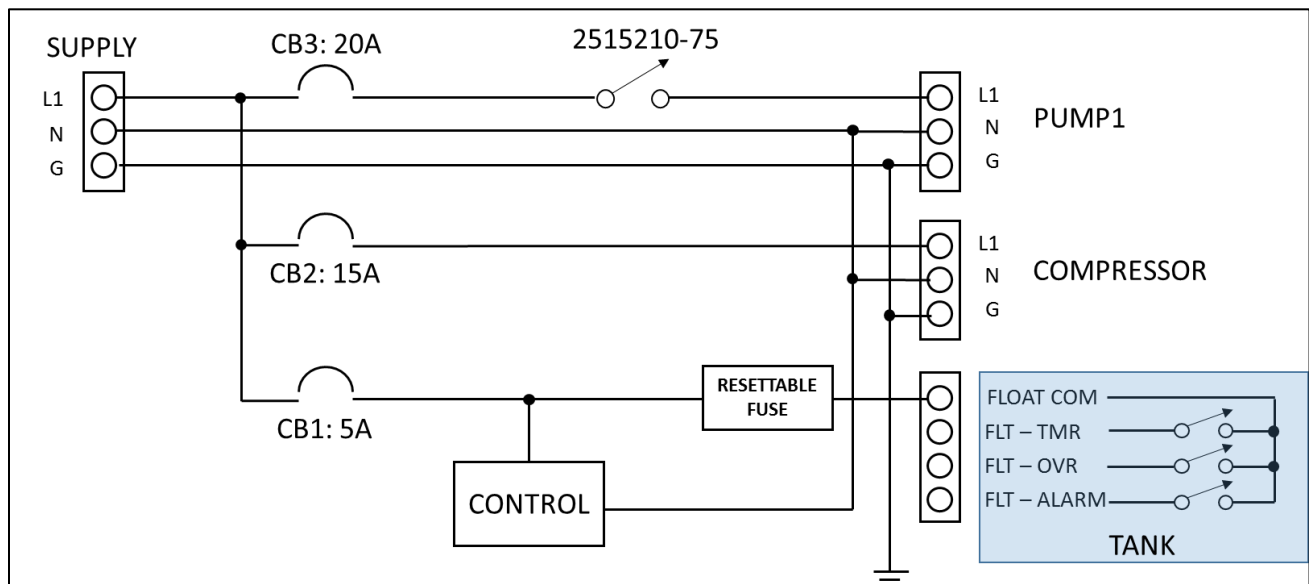
The control features one replaceable relay module. The relay is rated for 30A.

The Module operates on the 2.4 GHz band and is compliant with IEEE 802.11 b/g/n.

The relay module P/N is 2515210-75.

The Remote Monitor Module continually samples the pump supply voltage and current, and the air compressor supply voltage and current. Additionally, it also monitors the air compressor pressure.

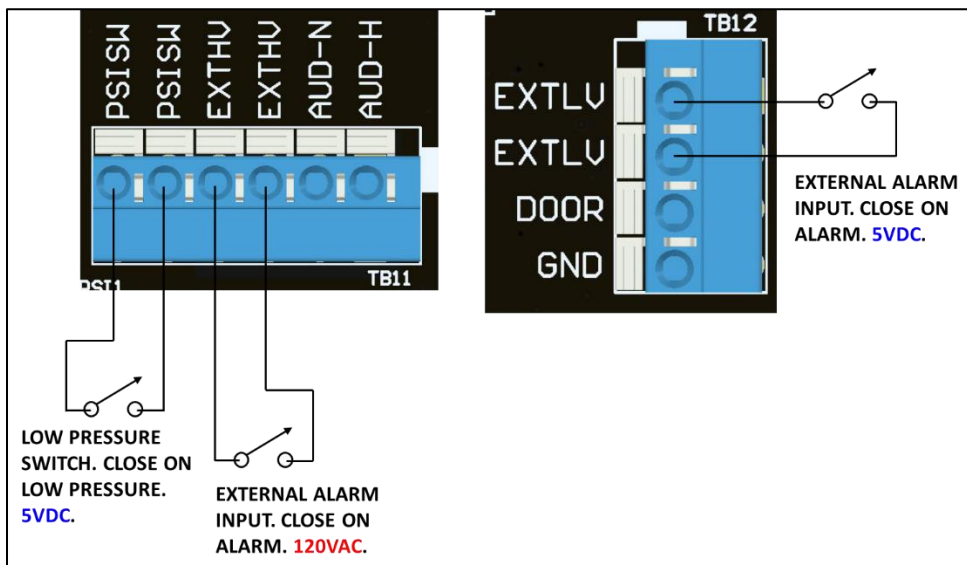
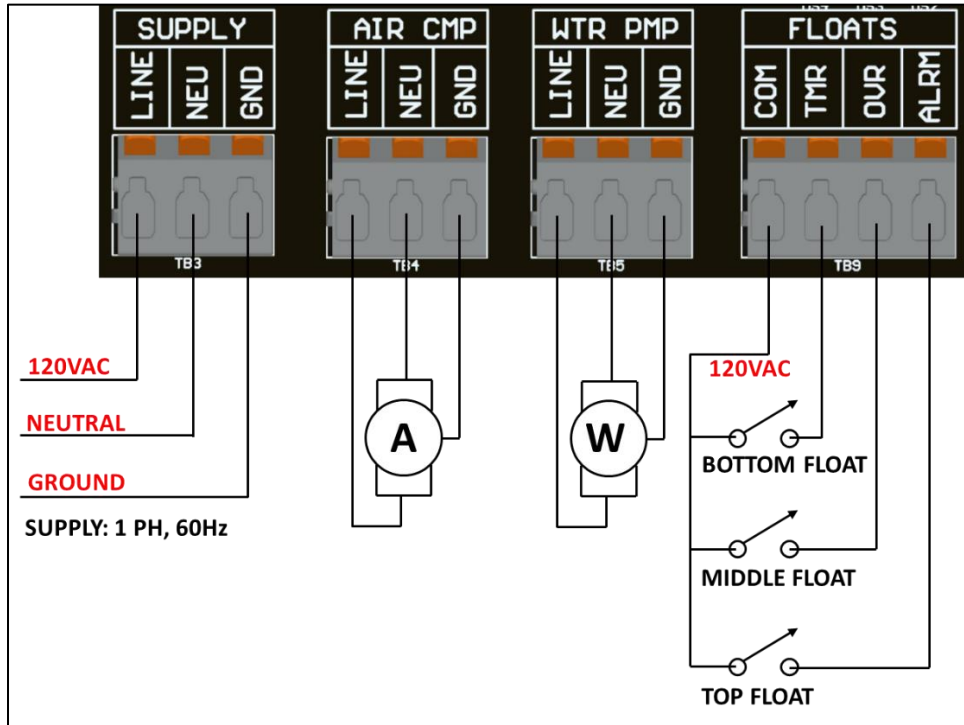
## Control Internal Wiring Diagram



# Data Sheet

# 2507000-02



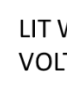
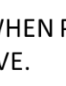
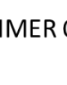
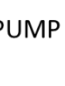
## Field Wiring Diagram



# Data Sheet

# 2507000-02

## Panel Indicator Description

+5V		DS9	CONTROL POWER SUPPLY ON. SHOULD ALWAYS BE LIT.
EXT-HV		DS8	LIT WHEN EXTERNAL HIGH VOLTAGE ALARM INPUT ACTIVE.
EXT-LV		DS7	LIT WHEN EXTERNAL LOW VOLTAGE ALARM INPUT ACTIVE
PSI SW		DS6	LIT WHEN PSI SWITCH INPUT IS ACTIVE.
TIMER EN		DS5	LIT WHEN TIMER OUTPUT IS ENABLED.
PUMP ON		DS1	LIT WHEN WATER PUMP IS ON.